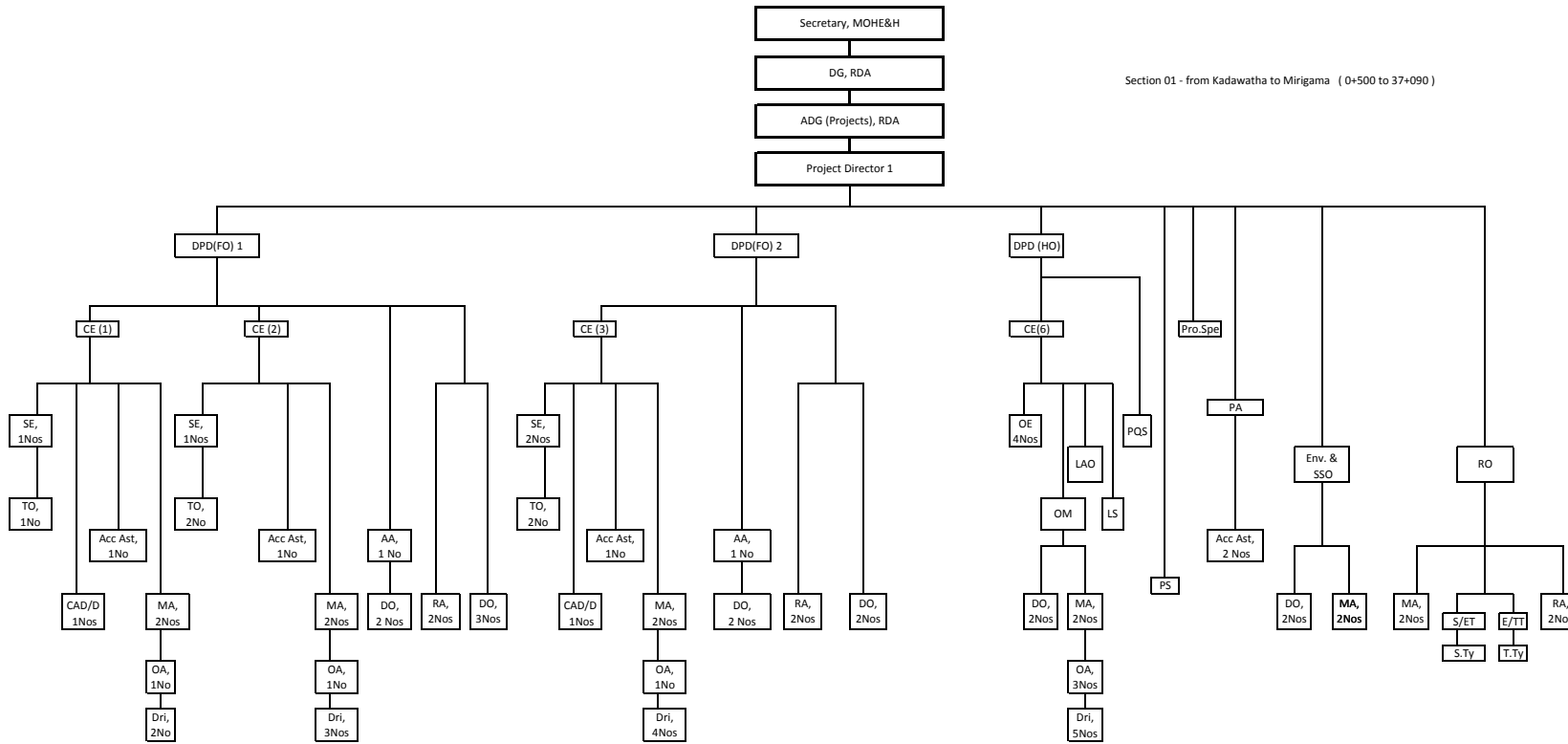


CENTRAL EXPRESSWAY PROJECT - SECTION 01

Section 01 - from Kadawatha to Mirigama (0+500 to 37+090)



DPD(FO) Deputy Project Director(Field office)
DPD(O) Deputy Project Director(Head Office)
CE1 Chief Engineer (Site Office)
CE2 Chief Engineer (Site Office)
CE3 Chief Engineer (DPD Filed Office)
CE4 Chief Engineer (Head Office)
Pro.Spe Procument Specialist

Env&SSC Environmental & Social Safeguard officer
DE Design Engineer
OE Engineer (Office)
SE Site Engineer
QS Quantity Surveyor
PA Project Accountant
PQS Project Quantity Surveyor
AA Administrative Assistant

PS Project Secretary
S/ET Sinhala English Translator
T.Ty Tamil Typist
E/TT English - Tamil Translator
S.Ty Sinhala Typist
OA Office Aid